

REVISION RECORD				
REV	ECO	DESCRIPTION	DRFT	CHKD

NOTES:

ELECTRICAL:

1. VOLTAGE RATING : 125 VAC RMS.
2. CURRENT RATING : 1.5 AMP.
3. CONTACT RESISTANCE : 30 MILLIOHMS MAX.
4. INSULATION RESISTANCE : 500 MEGOHMS MIN @ 500V DC .
5. DIELECTRIC STRENGTH : 1000V AC RMS 50Hz. 1MIN.

MECHANICAL:

1. HOUSING MATERIAL : GLASS FILLED POLYESTER UL94V-0.
2. CONTACT MATERIAL : PHOSPHOR BRONZE ϕ 0.46mm.
3. PLATING : GOLD PLATING OVER NICKEL.
4. OPERATING : 750 CYCLES MIN.
5. PCB RETENTION PRE-SOLDER : 1 LB MIN.

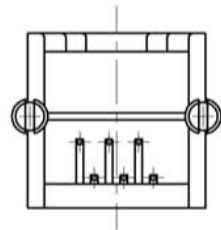
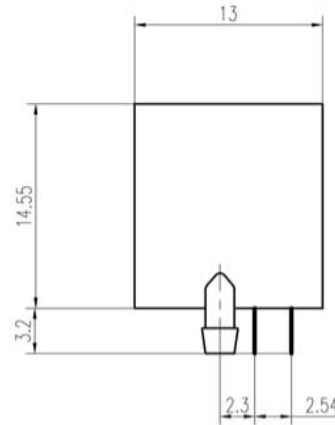
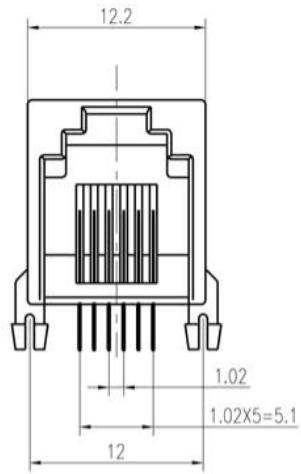
ENVIRONMENTAL:

1. Temperature Range : $-45^{\circ}\text{C} \sim +85^{\circ}\text{C}$
2. Relative Humidity : $90 \sim 95\%$ ($40 \pm 2^{\circ}\text{C}$)

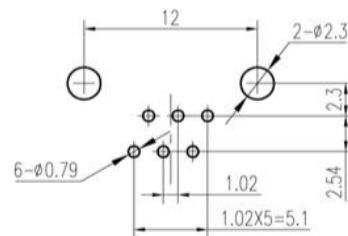
PART NUMBER:

DY 124 -

3u" 6u" 15u" 30u" 50u" PD20u"
 B (Black color) G (Gray color)
 6P2C 6P4C 6P6C
 Part No.



PCB LAYOUT



<div style="writing-mode: vertical-rl; transform: rotate(180deg);">DETACHED LISTS</div>		mm (inch)		DFTO: DATE:		深圳市金航标电子有限公司 WWW.BDS666.COM 型号: KH-PCB-6P6C 0755-83044319		
		Tolerance Except as Noted		CHKD: DATE:				
0 ± 0.2	±	MFO: DATE:		APPVL: DATE:		DRAWING NO. SIZE REV		
00 ± 0.15	±	MATERIAL:		Q' TY:				A4 06/05/02
000 ± 0.075	±	ANGLES ± 0.5		FINISH:				0
				SCALE: 2:1		DO NOT SCALE DRAWING SHEET OF		