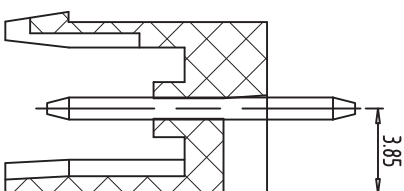
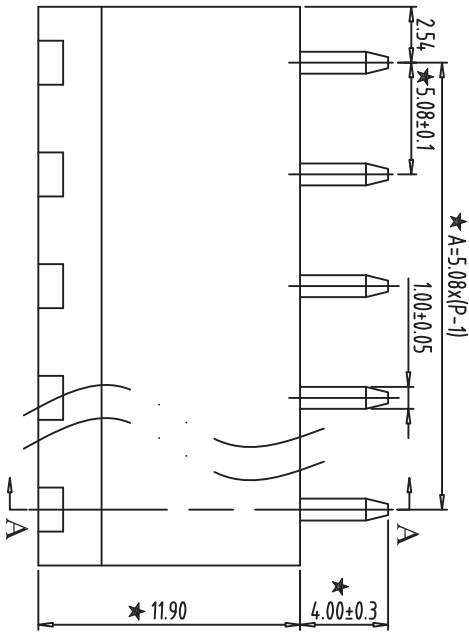
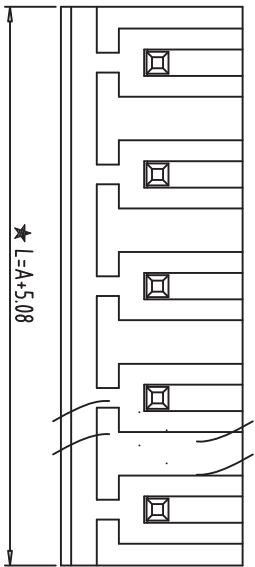
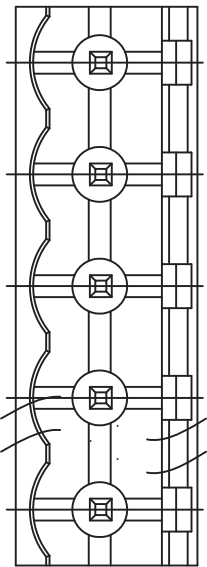
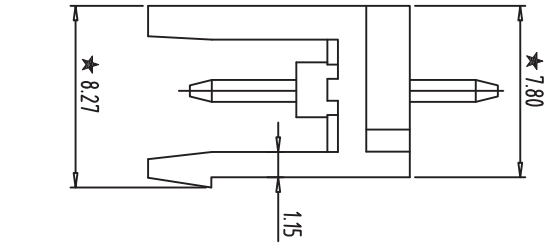


PCB LAYOUT
S=2:1



SECTION:A-A



- NOTES:
1. Rating:300V 15A ;
 2. Insulation Withstands Voltage: AC2000V/MIN
 3. Insulation Resistance: 500MΩ or more at DC500V
 4. Using Temperature Range: -40°C~+105°C
 5. "★" is the important dimension
 6. RoHS compliance

Total Pitch Tolerances		Nominal dimension range																																																																																																																																																																																																																																																																																																																																																																																																																																																																																																																																																																																																																																																																																																																																																																																																																																																																																																																																																																																																																																																																																																																																																																																																																																																																																																																																																																																																																																																																																														
In mm		In mm																																																																																																																																																																																																																																																																																																																																																																																																																																																																																																																																																																																																																																																																																																																																																																																																																																																																																																																																																																																																																																																																																																																																																																																																																																																																																																																																																																																																																																																																																														
0	to	0	to	30	to	53	to	70	to	90	to	115	to	150	to	200	to	250	to	320	to	100	to	150	to	200	to	250	to	300	to	350	to	400	to	450	to	500	to	550	to	600	to	650	to	700	to	750	to	800	to	850	to	900	to	950	to	1000	to	1050	to	1100	to	1150	to	1200	to	1250	to	1300	to	1350	to	1400	to	1450	to	1500	to	1550	to	1600	to	1650	to	1700	to	1750	to	1800	to	1850	to	1900	to	1950	to	2000	to	2050	to	2100	to	2150	to	2200	to	2250	to	2300	to	2350	to	2400	to	2450	to	2500	to	2550	to	2600	to	2650	to	2700	to	2750	to	2800	to	2850	to	2900	to	2950	to	3000	to	3050	to	3100	to	3150	to	3200	to	3250	to	3300	to	3350	to	3400	to	3450	to	3500	to	3550	to	3600	to	3650	to	3700	to	3750	to	3800	to	3850	to	3900	to	3950	to	4000	to	4050	to	4100	to	4150	to	4200	to	4250	to	4300	to	4350	to	4400	to	4450	to	4500	to	4550	to	4600	to	4650	to	4700	to	4750	to	4800	to	4850	to	4900	to	4950	to	5000	to	5050	to	5100	to	5150	to	5200	to	5250	to	5300	to	5350	to	5400	to	5450	to	5500	to	5550	to	5600	to	5650	to	5700	to	5750	to	5800	to	5850	to	5900	to	5950	to	6000	to	6050	to	6100	to	6150	to	6200	to	6250	to	6300	to	6350	to	6400	to	6450	to	6500	to	6550	to	6600	to	6650	to	6700	to	6750	to	6800	to	6850	to	6900	to	6950	to	7000	to	7050	to	7100	to	7150	to	7200	to	7250	to	7300	to	7350	to	7400	to	7450	to	7500	to	7550	to	7600	to	7650	to	7700	to	7750	to	7800	to	7850	to	7900	to	7950	to	8000	to	8050	to	8100	to	8150	to	8200	to	8250	to	8300	to	8350	to	8400	to	8450	to	8500	to	8550	to	8600	to	8650	to	8700	to	8750	to	8800	to	8850	to	8900	to	8950	to	9000	to	9050	to	9100	to	9150	to	9200	to	9250	to	9300	to	9350	to	9400	to	9450	to	9500	to	9550	to	9600	to	9650	to	9700	to	9750	to	9800	to	9850	to	9900	to	9950	to	10000	to	10050	to	10100	to	10150	to	10200	to	10250	to	10300	to	10350	to	10400	to	10450	to	10500	to	10550	to	10600	to	10650	to	10700	to	10750	to	10800	to	10850	to	10900	to	10950	to	11000	to	11050	to	11100	to	11150	to	11200	to	11250	to	11300	to	11350	to	11400	to	11450	to	11500	to	11550	to	11600	to	11650	to	11700	to	11750	to	11800	to	11850	to	11900	to	11950	to	12000	to	12050	to	12100	to	12150	to	12200	to	12250	to	12300	to	12350	to	12400	to	12450	to	12500	to	12550	to	12600	to	12650	to	12700	to	12750	to	12800	to	12850	to	12900	to	12950	to	13000	to	13050	to	13100	to	13150	to	13200	to	13250	to	13300	to	13350	to	13400	to	13450	to	13500	to	13550	to	13600	to	13650	to	13700	to	13750	to	13800	to	13850	to	13900	to	13950	to	14000	to	14050	to	14100	to	14150	to	14200	to	14250	to	14300	to	14350	to	14400	to	14450	to	14500	to	14550	to	14600	to	14650	to	14700	to	14750	to	14800	to	14850	to	14900	to	14950	to	15000	to	15050	to	15100	to	15150	to	15200	to	15250	to	15300	to	15350	to	15400	to	15450	to	15500	to	15550	to	15600	to	15650	to	15700	to	15750	to	15800	to	15850	to	15900	to	15950	to	16000	to	16050	to	16100	to	16150	to	16200	to	16250	to	16300	to	16350	to	16400	to	16450	to	16500	to	16550	to	16600	to	16650	to	16700	to	16750	to	16800	to	16850	to	16900	to	16950	to	17000	to	17050	to	17100	to	17150	to	17200	to	17250	to	17300	to	17350	to	17400	to	17450	to	17500	to	17550	to	17600	to	17650	to	17700	to	17750	to	17800	to	17850	to	17900	to	17950	to	18000	to	18050	to	18100	to	18150	to	18200	to	18250	to	18300	to	18350	to	18400	to	18450	to	18500	to	18550	to	18600	to	18650	to	18700	to	18750	to	18800	to	18850	to	18900	to	18950	to	19000	to	19050	to	19100	to	19150	to	19200	to	19250	to	19300	to	19350	to	19400	to	19450	to	19500	to	19550	to	19600	to	19650	to	19700	to	19750	to	19800	to	19850	to	19900	to	19950	to	20000	to	20050	to	20100	to	20150	to	20200	to	20250	to	20300	to	20350	to	20400	to	20450	to	20500	to	20550	to	20600	to	20650	to	20700	to	20750	to	20800	to	20850	to	20900	to	20950	to	21000	to	21050	to	21100	to	21150	to	21200	to	21250	to	21300	to	21350	to	21400	to	21450	to	21500	to	21550	to	21600	to	21650	to	21700	to	21750	to	21800	to	21850	to	21900	to	21950	to	22000	to	22050	to	22100	to	22150	to	22200	to	22250	to	22300	to	22350	to	22400	to	22450	to	22500	to	22550	to	22600	to	22650	to	22700	to	22750	to	22800	to	22850	to	22900	to	22950	to	23000	to	23050	to	23100	to	23150	to	23200	to	23250	to	23300	to	23350	to	23400	to	23450	to	23500	to	23550	to	23600	to	23650	to	23700	to	23750	to	23800	to	23850	to	23900	to	23950	to	24000	to	24050	to	24100	to	24150	to	24200	to	24250	to	24300	to	24350	to	24400	to	24450	to	24500	to	24550	to	24600	to	24650	to	24700	to	24750	to	24800	to	24850	to	24900	to	24950	to	25000	to	25050	to	25100	to	25150	to	25200	to	25250	to	25300	to	25350	to	25400	to	25450	to	25500	to	25550	to	25600	to	25650	to	25700	to	25750	to	25800	to	25850	to	25900	to	25950	to	26000	to	26050	to	26100	to	26150	to	26200	to	26250	to	26300	to	26350	to	26400	to	26450	to	26500	to	26550	to	26600	to	26650	to	26700	to	26750	to	26800	to	26850	to	26900	to	26950	to	27000	to	27050	to	27100	to	27150	to	27200	to	27250	to	27300	to	27350	to	27400	to	27450	to	27500	to	27550	to	27600	to	27650	to	27700	to	27750	to	27800	to	27850	to	27900	to	27950	to	28000	to	28050	to	28100	to	28150	to	28200	to	28250	to	28300	to	28350	to	28400	to	28450	to	28500	to	28550	to	28600	to	28650	to	28700	to	28750	to	28800	to	28850	to	28900	to	28950	to	29000	to	29050	to	29100	to	29150	to	29200	to	29250	to	29300	to	29350	to	29400	to	29450	to	29500	to	29550	to	29600	to	29650	to	29700	to	29750	to	29800	to	29850	to	29900	to	29950	to	30000	to	30050	to	30100	to	30150	to	30200	to	30250	to	30300	to	30350	to	30400	to	30450	to	30500	to	30550	to	30600	to	30650	to	30700	to	30750	to	30800	to	30850	to	30900	to	30950	to	31000	to	31050	to	31100	to	31150	to	31200	to	31250	to	31300	to	31350	to	31400	to	31450	to	31500	to	31550	to	31600	to	31650	to	31700	to	31750	to	31800	to	31850	to	31900	to	31950	to	32000	to	32050	to	32100	to	32150	to	32200	to	32250	to	32300	to	32350	to	32400	to	32450	to	32500	to	32550	to	32600	to	32650	to	32700	to	32750	to	32800	to	32850	to	32900	to	32950	to	33000	to	33050	to	33100	to	33150	to	33200	to	33250	to	33300	to	33350	to	33400	to	33450	to	33500	to	33550	to	33600	to	33650	to	33700	to	33750	to	33800	to	33850	to	33900	to	33950	to	34000	to	34050	to	34100	to	34150	to	34200	to	34250	to	34300	to	34350	to	34400	to	34450	to	34500	to	34550	to	34600	to	34650	to	34700	to	34750	to	34800	to	34850	to	34900	to	34950	to	35000	to	35050	to	35100	to	35150	to	35200	to	35250	to	35300	to	35350	to	35400	to	35450	to	35500	to	35