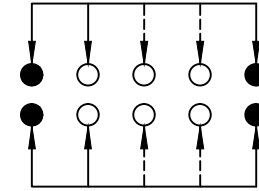
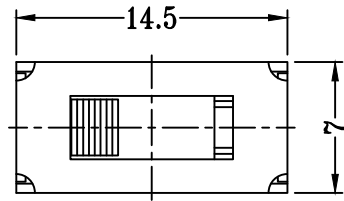
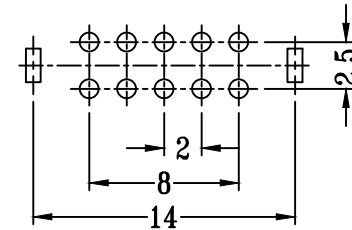
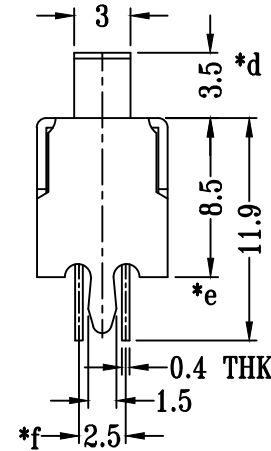
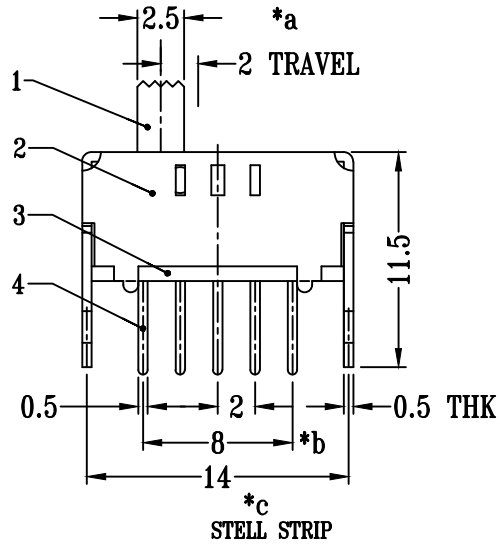


CAD FILE:

Kinghelm®



SCHEMATIC (NON-SHORTING)



**P.C.B LAYOUT
BOTTOM VIEW**

注：“*”口表示关键尺寸(6个).

| NO. | PARTS | MATERIALS | Q'TY | FINISH | TOLERANCE UNLESS SPECIFIED | | | | |
|-----|--------------|----------------|------|-----------|-------------------------------|-------|---------------------|--------------------------------|-----------|
| 8 | | | | | | | | | |
| 7 | STEEL BALL | STELL STRIP | 1 | NATURAL | | | | | |
| 6 | SPRING | STEEL WIRE | 1 | TEMPER | WITHIN 1.5mm : ±0.1mm | A | 2012-9-21 | 初版 | |
| 5 | CONTACT CLIP | PBS C5210R-EH | 2 | Ag CLAD | OVER 1.5mm : ±0.2mm | ISSUE | DATE | DESCRIPTIONS OF REVISION | APPD. |
| 4 | TERMINAL | BRASS STRIP | 10 | Ag PLATED | TITLE : VERTICAL SLIDE SWITCH | | UNIT : mm | DRWG NO.: LT-DR-SS23D28G3.5-00 | |
| 3 | BASE | PHENOLIC RESIN | 1 | NATURAL | MODEL: SS23D28G3.5 | | SCALE: 5:2 | DWN. | 李燕 |
| 2 | FRAME | STEEL STRIP | 1 | Ni PLATED | 深圳市金航标电子有限公司 | | www.kinghelm.com.cn | CHK'D | 刘建付 |
| 1 | KNOB | POM | 1 | BLACK | KH-SS23D28-G3.5 | | 0755-28190160 | APPD. | 2012-9-21 |