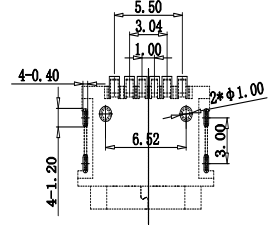
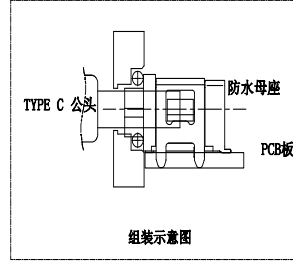
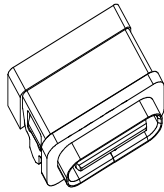
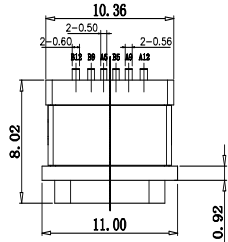




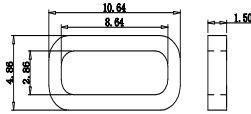
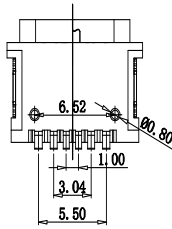
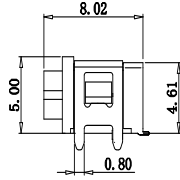
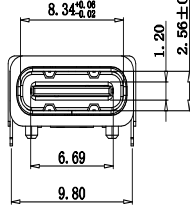
Kinghelm®

| REV. | ZONE | DESCRIPTION | DESIGN | DATE |
|------|------|-------------|--------|------|
| A | | NEW | | |



RECOMMENDED PCB LAYOUT (TOP VIEW)

THICKNESS T=1.0mm
DEFAULT TOLERANCE+/-0.05



建议的胶圈尺寸

NOTES:

SPCIFICATION:

- CURRENT RATING: 3.0A MAX
- DIELECTRIC WITHSTAND VOLTAGE: 100VAC
- TEMPERATURE RANGE: -30 °C ~ 85 °C
- CONTACT RESISTANCE: 40 MILLIONΩ MAX
- INSULATION RESISTANCE: 100 MEGOHMS MIN.
- INSERTION FORCE : 5N~20N
- UNMATING FORCE: 8N~20N
- DURABILITY:5000 CYCLES

50 Min/1.5m
IP-X8

| | | | |
|-----|-------------|-----|-------------|
| A9 | VBUS | B12 | GND |
| A12 | GND | B9 | VBUS |
| PIN | SIGNAL NAME | PIN | SIGNAL NAME |

| ITEM | PART NAME | Q'TY | FINISH | NOTE |
|------|-----------|------|---|--|
| 5 | Shell2 | 1 | SUS301 Ni Plating T=0.20mm | Ni:40~120u"; |
| 4 | Shell1 | 1 | SUS301 Ni Plating T=0.30mm | |
| 3 | Housing2 | 1 | LCP (G.F30%) | |
| 2 | Contact | 4 | Phosphor bronze C5210R-EH Au/Ni Plating T=0.20mm | Ni:40~160u"; Au:CONTACT AREA:3u"; OTHER AREA:6/P |
| 1 | Housing | 1 | LCP (G.F30%) | |

| | | | | | |
|------|--------|------|--------|-------|----|
| X. | ± 0.50 | X.' | ± 2' | UNITS | mm |
| .X | ± 0.30 | .X' | ± 1' | | |
| .XX | ± 0.10 | .XX' | ± 0.5' | MAT'L | |
| .XXX | ± 0.05 | | | | |

| | | |
|--|-----------------------------------|------|
| 深圳市金航标电子有限公司 | WWW.BDS666.COM | |
| KH-TYPE-C-W.FS-6P-STM | 0755-83044319 | |
| TITLE: USB 3.1type-c 6p 板上防水四脚 | | |
| APPD: | DWG NO.: CY-HTF1-6C-730 | |
| CHKD: | | |
| DR: | | |
| SCALE | SHEET | REV. |
| 1/1 | 1/1 | A.1 |

THESE DRAWINGS AND SPECIFICATIONS ARE THE PROPERTY OF SHENZHEN CHANGHANG TECHNOLOGY CO.,LTD. AND SHALL NOT BE REPRODUCED, COPIED OR USED IN ANY MANNER WITHOUT THE PRIOR WRITTEN CONSENT OF SHENZHEN CHANGHANG TECHNOLOGY CO.,LTD.